

NEW PRODUCT OF 2023

KASI

D400

BRIDGE DRAINAGE SYSTEM 300x500

EASY TO USE AND DURABLE

The bridge drain is an openable grating with a large inlet area, 300×500 mm frame size.

It consists of an inlet grate with a frame and a gully body with a draining pipe. It can be equipped with a removable dirt trap to collect any sediment. For ease of use and safety, the grille is connected to the frame with hinges and is lockable with a screw. The frame is fitted with a PUR damping insert for quiet operation even in heavy traffic conditions. The grate complies with EN124-2 in class D400.

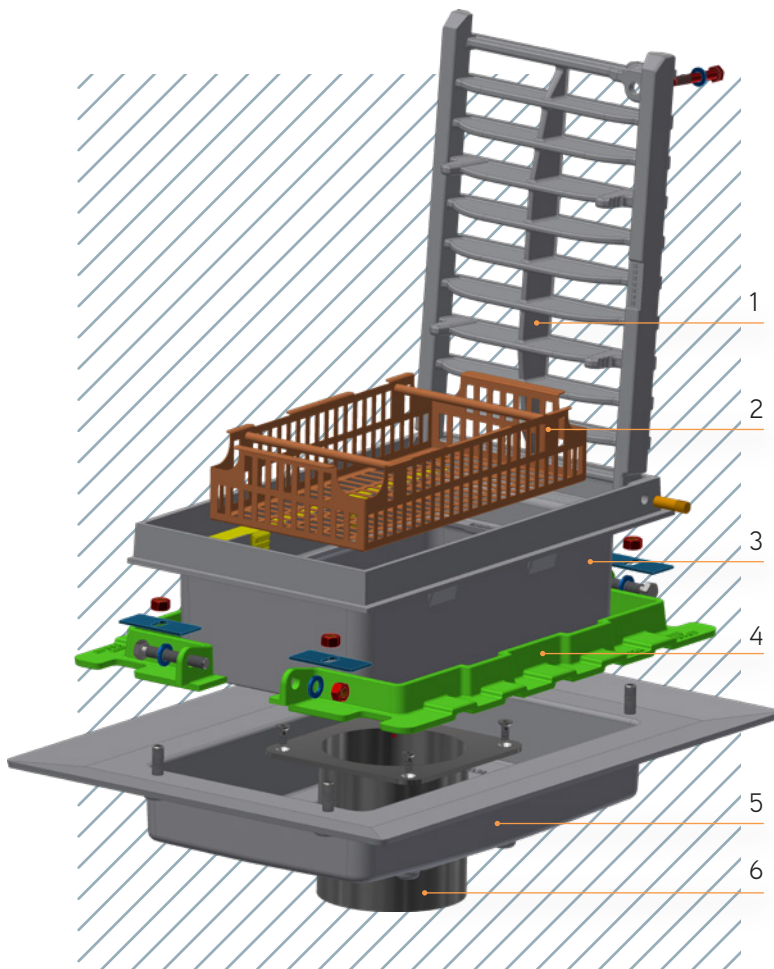


- | frame with a vertically, laterally and angularly adjustable grate
- | fixing flange which is fitted with drainage grooves to facilitate water drainage from the insulation
- | inserting stainless-steel drain pipe DN 150 and DN 100, vertical or up to 20° inclined from the vertical, with a flange and bolts for watertight connection to the bottom part
- | flange width for insulation bonding 100 mm
- | frame distance from the cornice or curb ≥20 mm
- | vertical adjustment within 85–165 mm
- | transverse and longitudinal adjustment up to 30 mm

ADVANTAGES OF THE KASI BRIDGE DRAINAGE SYSTEM

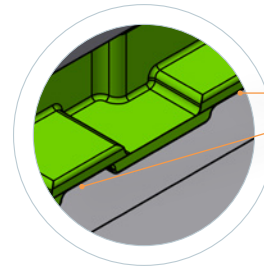
- | easy installation
- | withstands heavy traffic load
- | silent operation
- | comfortable maintenance
- | silencing PUR insert in the frame resistant to oil and de-icing agents
- | removable dirt trap
- | grating lockable with a screw
- | two-coat powder paint finish

KASI bridge drainage system assembly

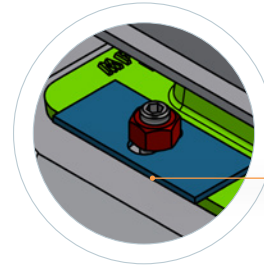


1 – Inlet grate
2 – Dirt trap
3 – Frame

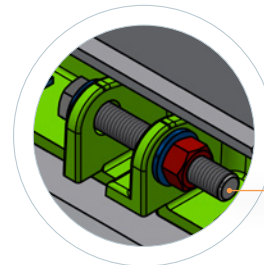
4 – Fixation flange
5 – Bottom part
6 – Sewage pipe



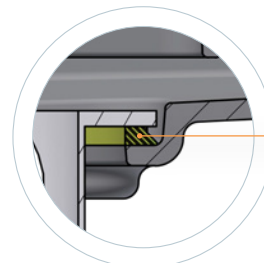
Drainage of insulation using grooves



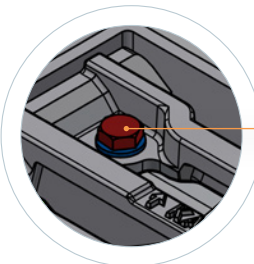
Securing of insulation and lateral and angular frame rectification



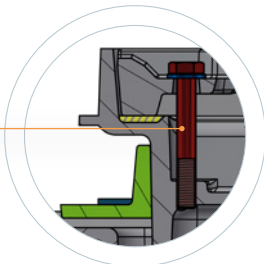
Height adjustment of frame with grate by tightening fixation flange



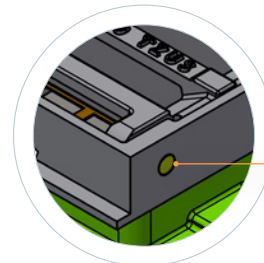
Integrated PUR seal under drain pipe flange



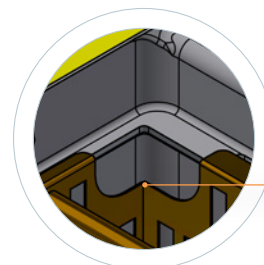
Grate lockable with a screw



Grate and frame connected by hinges

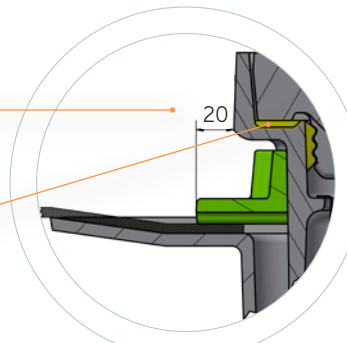


Openings in dirt trap corners to ensure water drainage via overflow



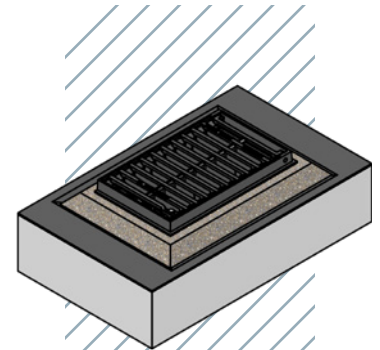
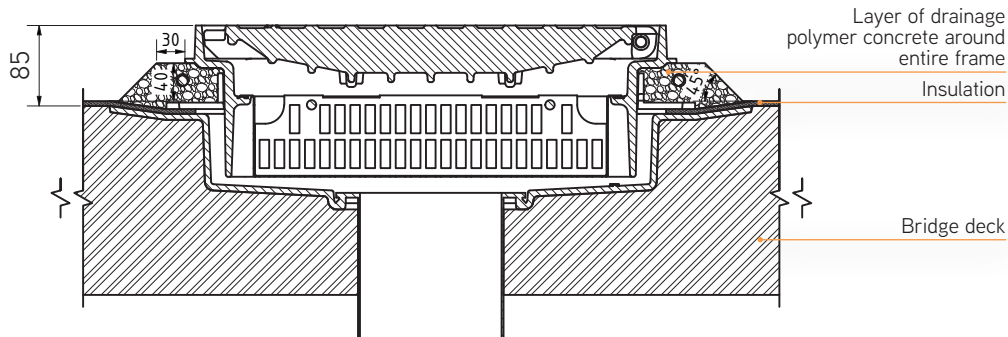
Minimum distance from cornice

Integrated PUR damping grate insert

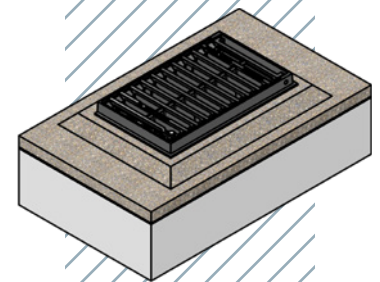
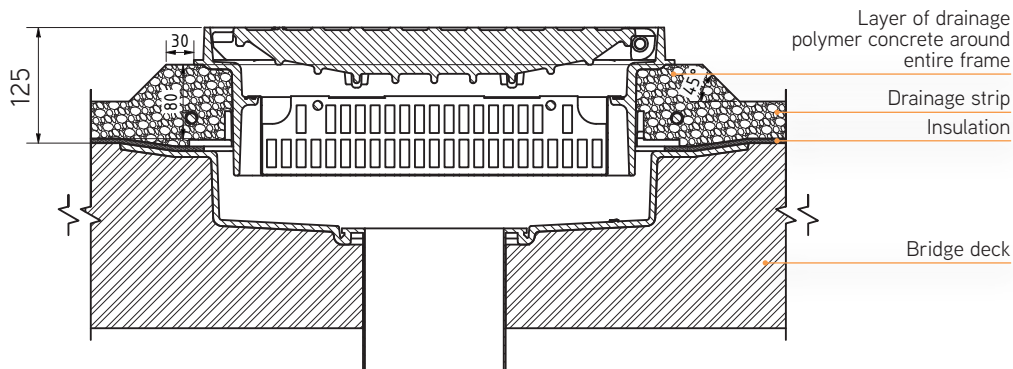


Installation diagram

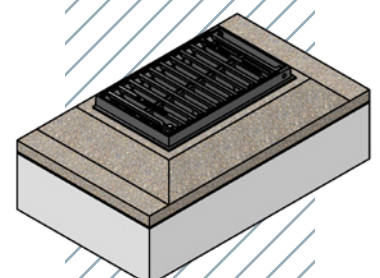
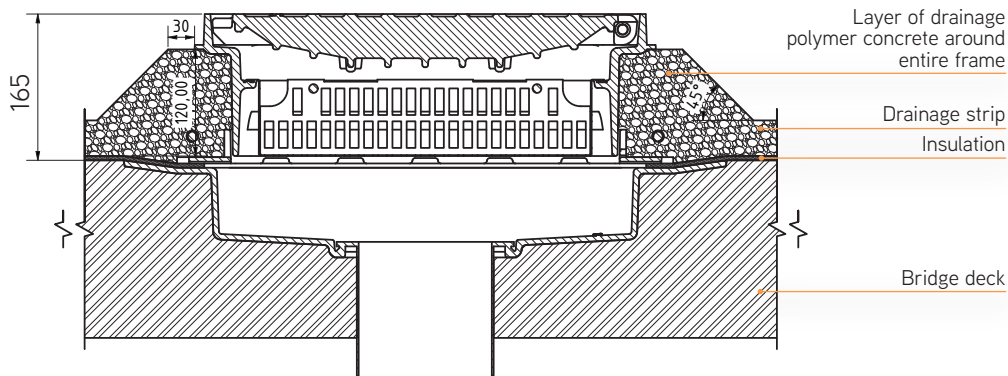
Height 85 mm



Height 125 mm



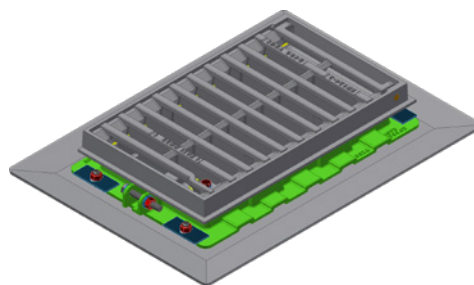
Height 165 mm



Bridge drain set

includes inlet grate, frame, fixation flange, bottom part and fasteners

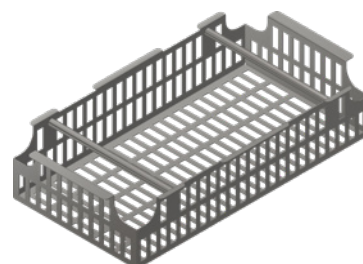
Dimensions:	300x500 mm
Height rectification:	85-165 mm
Material:	cast iron
Order code:	MK35CZ



Dirt trap

for bridge set MK35CZ

Material:	hot dip galvanised steel
Order code:	MU35



Sewage pipe

for bridge set MK35CZ, insertable with flange connection incl. screws

Dimensions:	DN 150 and DN 100
Length:	standard 500 mm and 1000 mm, other lengths on request
Type:	standard vertical, inclined up to 20° on request
Material:	stainless steel
Order code for DN 150:	MT150x500 and MT150x1000
Order code for DN 100:	MT100x500 and MT100x1000



Insulation surface drainage pipe

assembly including cover grate with fixation

Dimensions:	DN 50
Length:	standard 500 mm and 1000 mm, other lengths on request
Type:	standard vertical, inclined on request
Material:	stainless steel
Order code:	MOT50x500 and MOT50x1000

