



# CATALOGUE OF RECOMMENDED PRODUCTS

**KASI**

# LEADING CZECH PRODUCER OF SEWER CAST IRON

KASl, spol. s r.o. was founded in 1992 as an engineering company operating in the field of concrete component production technology. Today, we are one of the most modern European producers of sewer components which we supply to the whole of Central and Eastern Europe.

Our product portfolio includes:

- | manhole covers and inlet gratings
- | adjustment rings and street gullies
- | auxiliary installation material
- | manhole steps
- | accessories for concrete production

We also offer production engineering and technology for the production of concrete components.

## INNOVATION AND NEW TECHNOLOGIES ARE OUR DOMAIN

Our development and testing centre is equipped with the latest technology and equipment. Years of experience in product development and production technology constitute the core know-how that we offer our customers. This guarantees product quality and a flexible response to the individual customer requirements. We perform any and all necessary tests of cast-iron and concrete components, as well as plastics and composites, on our in-house equipment. A test polygon with a swivel arm and a multi-tonne load also allows us to test the covers in real operation.



IN-HOUSE FOUNDRY  
AND CONCRETE  
PLANT



EMPHASIS ON  
TECHNOLOGY AND  
PRODUCT INNOVATIONS



PRODUCT  
DEVELOPMENT AND  
TESTING



AUTOMATED  
AND OPTIMISED  
PRODUCTION



CUSTOMER-  
SPECIFIC  
SOLUTIONS





ČESKÝ  
VÝROBCE



EKOLOGIE

## IN-HOUSE FOUNDRY AND CONCRETE PLANT MAKE OUR PRODUCTION INDEPENDENT

Foundries near Nový Bydžov and in Chvaletice, a concrete plant and engineering production in Přelouč make our production independent. The facilities are equipped with the latest production technologies, including automated lines and robotic stations.

## WE RESPOND FLEXIBLY TO CUSTOMER NEEDS

We focus not only on production quality, technology and automation, but also on customer support. We help our clients choose the right product, offer custom-specific solutions, installation and maintenance consultation. We offer covers with the logo of the customer, city or company.







## COVERING OF MANHOLES IN GRASS-COVERED AND UNPAVED AREAS

# A15



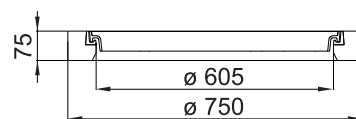
Circular manhole covers DN 600 of A15 class for grass-covered and unpaved areas that are loaded only by pedestrians and cyclists. The class is subject to the maximum load of 1.5 ton according to EN 124-2.

### KAB01 | Cover with concrete-cast iron frame, concrete-cast iron lid

DN 600, without damping gasket



Weight:	72 kg
Packing:	16 pcs/pal
Code:	<b>KAB01</b>

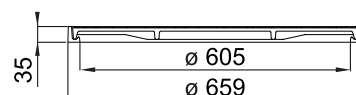


### KAL02 | Cover with cast-iron frame, cast-iron lid

DN 600, without damping gasket



Weight:	25 kg
Packing:	30 pcs/pal
Code:	<b>KAL02</b>





COVERING OF MANHOLES IN PAVEMENTS AND CAR PARKS

# B125

Circular manhole covers DN 600 of B125 class for covering sewer manholes in pavements, pedestrian zones and car parks. The class is subject to loads according to EN 124-2. Cast-iron and concrete-cast iron manhole covers are available with or without a hinge.



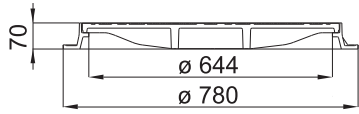
B125

**KBP11B | Cover with cast-iron frame, cast-iron lid, with hinge**

DN 600, without damping gasket, without spring lock



Weight:	37 kg
Packing:	30 pcs/pal
Code:	<b>KBP11B</b>
Ventilated version:	
Code:	<b>KBP12B</b>

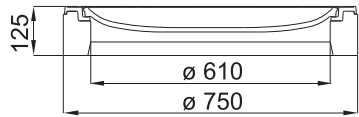


**KBB01 | Cover with concrete-cast iron frame, concrete-cast iron lid**

DN 600, without damping gasket, without spring-loaded lid locking in frame



Weight:	102 kg
Packing:	12 pcs/pal
Code:	<b>KBB01</b>
Ventilated version:	
Code:	<b>KBB02</b>



# D400 – light traffic load



The manhole covers are designed to cover manholes in roads with light traffic load, for local roads with passenger traffic and maximum traffic of 15 trucks per day. They are not suitable for roads with heavy traffic loads.

The covers meet the requirements of EN124-2 in D400 load class.

## Europa 7

Hinged covers made of ductile cast iron and fitted with spring-loaded lid locking in the frame. Vertical shock-absorption is provided by a PUR damping gasket in the frame that is resistant to oils, salts and de-icing agents.

The cover can be secured against theft by non-removable lid-frame connection with a stainless steel pin. The safety of work when entering the shaft is ensured by locking of the open lid at 90°.



## Standard

Standard series covers are heavy covers without hinges, secured by dead weight. The lid is made of cast iron or in a concrete and cast iron combination, and is available in version with or without ventilation. Vertical shock-absorption is provided by a PUR damping gasket in the frame that is resistant to oils, salts and de-icing agents.

- | basic range of covers optimised for light traffic loads
- | highly resistant PUR damping gasket in the frame
- | limited variability of frames
- | optional frame for dirt trap installation
- | easy lid replacement for STANDARD series
- | option of removable or non-removable hinge connection with a pin for EUROPA series
- | option of customer logo on cast-iron lid in extra size



**COVERING OF MANHOLES IN LOCAL  
AND SECONDARY ROADS**



## KDL71B | Cover with cast-iron frame, cast-iron lid

DN 600, horizontal PUR damping gasket, multi-point spring-loaded lid locking in frame



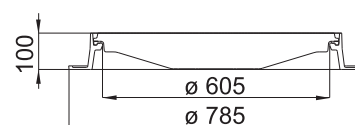
Weight: 54 kg

Packing: 20 pcs/pal

Code: **KDL71B**

Ventilated version:

Code: **KDL72B**



## KDK7MB | Circular gratings with cast-iron frame

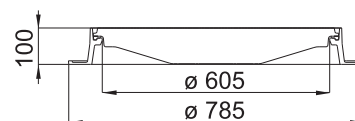
DN 600, horizontal PUR damping gasket, multi-point spring-loaded lid locking in frame, pockets for trap mounting



Weight: 52 kg

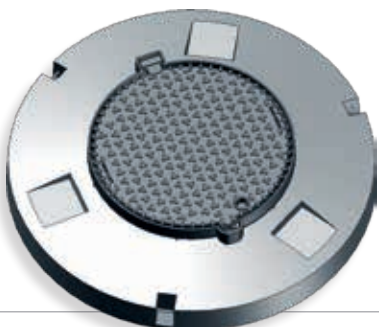
Packing: 20 pcs/pal

Code: **KDK7MB**



## KDG71B | Cover with spreading frame, cast-iron lid

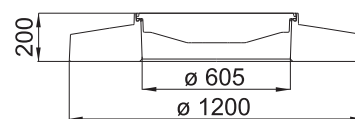
DN 600, horizontal PUR damping gasket, multi-point spring-loaded locking of the lid in the frame, use for slightly damaged manholes or in problematic conditions, spreads the load to outside of the manhole



Weight: 310 kg

Packing: 5 pcs/pal

Code: **KDG71B**



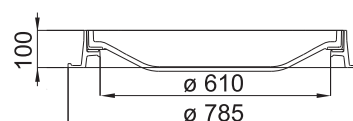


## KDL02 | Cover with cast-iron frame, concrete-cast iron lid

DN 600, horizontal PUR damping gasket, lid secured by dead weight



Weight:	105 kg
Packing:	10 pcs/pal
Code:	<b>KDL02</b>
Ventilated version:	
Code:	<b>KDL01</b>

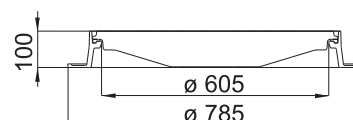


## KDL05 | Cover with cast-iron frame, cast-iron lid

DN 600, horizontal PUR damping gasket, lid secured by dead weight



Weight:	103 kg
Packing:	10 pcs/pal
Code:	<b>KDL05</b>
Ventilated version:	
Code:	<b>KDL03</b>

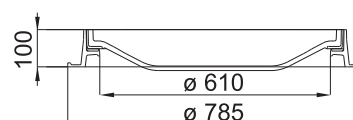


## KDL16 | Cover with cast-iron frame, concrete-cast iron lid, ventilated

DN 600, horizontal PUR damping gasket, lid secured by dead weight



Weight:	113 kg
Packing:	10 pcs/pal
Code:	<b>KDL16</b>



# D400 – heavy traffic load



The manhole covers are designed to cover manholes in roads with high traffic load, for roads with a maximum traffic of 500 trucks per day.

The covers meet the requirements of EN124-2 in D400 load class.

## Europa 9

Hinged covers made of ductile cast iron and fitted with spring-loaded lid locking in the frame. Vertical and horizontal shock-absorption is provided by a PUR damping gasket on the lid, resistant to oils, salts and de-icing agents.

The lid can be secured against theft by non-removable connection of the lid to the frame with a stainless steel pin. The safety of work when entering the shaft is ensured by locking of the open lid at 90 °.



## Standard

Standard series covers are heavy covers without hinges, secured by dead weight. The lid is made of cast iron or in a combination of concrete and cast iron, and is available in version with or without ventilation. Vertical shock-absorption is provided by a PUR damping gasket in the frame that is resistant to oils, salts and de-icing agents.

- | medium range of covers suitable for heavy traffic loads
- | PUR damping gasket between frame and lid
- | large variety of frames and lids
- | option of removable or non-removable hinge connection with a pin for Europa series
- | option of customer logo on cast-iron lid in extra size
- | option of quiet design option for greater comfort

**COVERING OF MANHOLES IN ROADS  
WITH HIGH TRAFFIC LOAD**



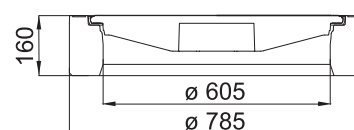


## KDB91B | Cover with concrete-cast iron frame, cast-iron lid

DN 600, vertical and horizontal KASI PUR damping gasket, multi-point spring-loaded locking in frame



Weight:	123 kg
Packing:	10 pcs/pal
Code:	<b>KDB91B</b>
Ventilated version:	
Code:	<b>KDB92B</b>

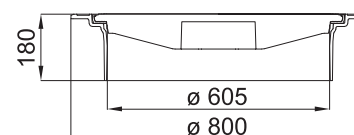


## KDM91B | Cover with self-levelling frame, cast-iron lid

DN 600, vertical and horizontal KASI PUR damping gasket, multi-point spring-loaded locking in frame



Weight:	71 kg
Packing:	14 pcs/pal
Code:	<b>KDM91B</b>
Ventilated version:	
Code:	<b>KDM92B</b>

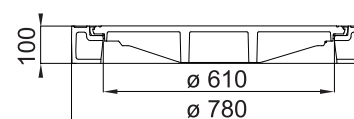


## KDR91C | Cover with cast-iron frame, cast-iron lid

DN 600, vertical and horizontal KASI PUR damping gasket, multi-point spring-loaded locking in frame



Weight:	76 kg
Packing:	16 pcs/pal
Code:	<b>KDR91C</b>
Ventilated version:	
Code:	<b>KDR92C</b>



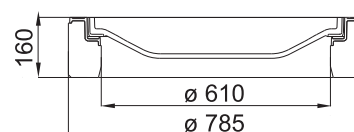
### KDB02 | Cover with concrete-cast iron frame, concrete-cast iron lid

DN 600, horizontal PUR damping gasket, lid secured by dead weight



Weight:	156 kg
Packing:	8 pcs/pal
Code:	<b>KDB02</b>

Ventilated version:	
Code:	<b>KDB01</b>



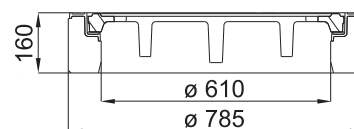
### KDB05 | Cover with cast-iron frame, cast-iron lid

DN 600, horizontal PUR damping gasket, lid secured by dead weight



Weight:	154 kg
Packing:	8 pcs/pal
Code:	<b>KDB05</b>

Ventilated version:	
Code:	<b>KDB03</b>



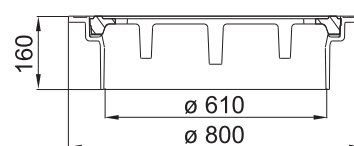
### KDM05 | Cover with self-levelling frame, cast-iron lid

DN 600, horizontal PUR damping gasket, lid secured by dead weight



Weight:	113 kg
Packing:	10 pcs/pal
Code:	<b>KDM05</b>

Ventilated version:	
Code:	<b>KDM03</b>



# D400 – extreme traffic load

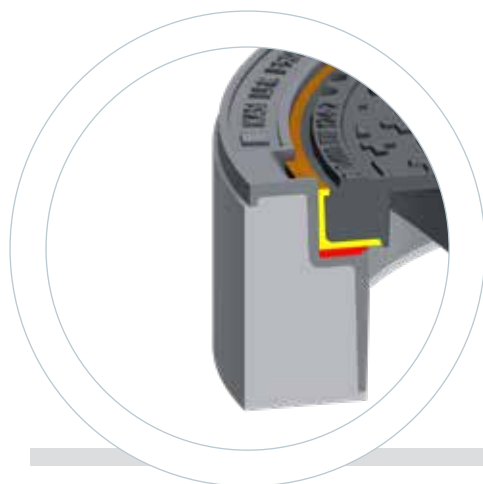


The manhole covers are designed for covering manholes in roads with extreme traffic load, for roads with traffic over 500 trucks per day, respectively for 1st class roads, intersections, highway crossing lanes. The covers meet the requirements of EN124-2 in load class of D400 to E600.

## Europa 9

Hinged covers made of ductile cast iron and fitted with spring-loaded lid locking in the frame. Vertical and horizontal shock-absorption is provided by a PUR damping gasket on the lid, resistant to oils, salts and de-icing agents.

The lid can be secured against theft by non-removable connection of the lid to the frame with a stainless steel pin. The safety of work when entering the shaft is ensured by locking of the open lid at 90°.



## Standard

Standard series covers are heavy covers without hinges, secured by dead weight. The lid is made of cast iron or in a concrete and cast iron combination, and is available in version with or without ventilation. Vertical and horizontal shock-absorption is provided by the KASI PUR damping gasket on the lid, which is resistant to oils, salts and de-icing agents.

- | top range of covers suitable for extreme traffic loads
- | KASI PUR damping gasket
- | heavier lids for greater durability
- | option of removable or non-removable hinge connection with a pin for Europa series
- | option of customer logo on cast-iron lid in extra size
- | option of quiet design for greater comfort



**COVERING OF MANHOLES WITH EXTREME TRAFFIC LOAD  
AND VERY FREQUENT CROSSING BY TRUCKS**

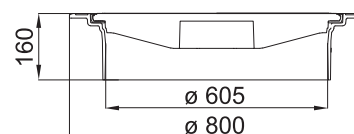


## KEM95B | Cover with self-levelling frame, cast-iron lid

DN 600, vertical and horizontal KASI PUR damping gasket, multi-point spring-loaded lock in frame, quiet design

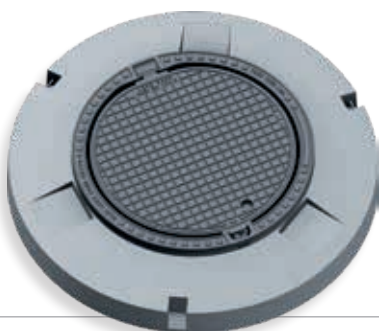


Weight:	75 kg
Packing:	14 pcs/pal
Code:	<b>KEM95B</b>
Ventilated version:	
Code:	<b>KEM96B</b>

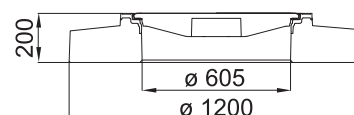


## KEG95B | Cover with concrete-cast iron spreading frame, cast-iron lid

DN 600, vertical and horizontal KASI PUR damping gasket, multi-point spring-loaded lock in frame, quiet design, use for lightly damaged manholes or in problematic conditions, spreads the load to outside of the manhole

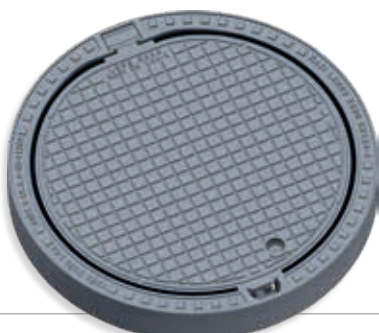


Weight:	336 kg
Packing:	5 pcs/pal
Code:	<b>KEG95B</b>
Ventilated version:	
Code:	<b>KEG96B</b>

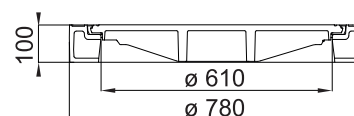


## KER95C | Cover with cast-iron frame, cast-iron lid

DN 600, vertical and horizontal KASI PUR damping gasket, multi-point spring-loaded lock in frame, quiet design

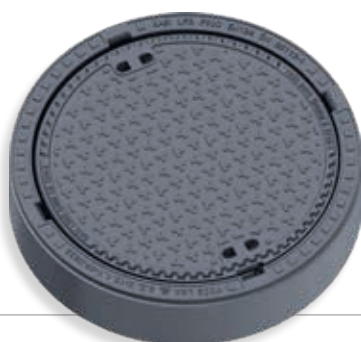


Weight:	81 kg
Packing:	14 pcs/pal
Code:	<b>KER95C</b>
Ventilated version:	
Code:	<b>KER96C</b>

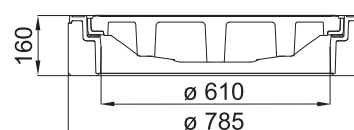


## KDQ65 | Cover with concrete-cast iron frame, cast-iron lid

DN 600, horizontal PUR damping gasket, lid secured by dead weight



Weight:	161 kg
Packing:	8 pcs/pal
Code:	<b>KDQ65</b>
Ventilated version:	
Code:	<b>KDQ63</b>

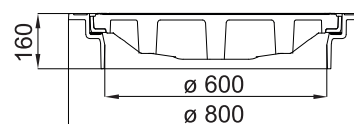


## KDM65 | Cover with self-levelling frame, cast-iron lid

DN 600, horizontal PUR damping gasket, lid secured by dead weight



Weight:	113 kg
Packing:	10 pcs/pal
Code:	<b>KDM65</b>
Ventilated version:	
Code:	<b>KDM63</b>

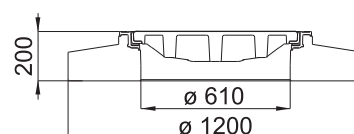


## KDG69 | Cover with concrete-cast iron spreading frame, cast-iron lid

DN 600, horizontal PUR damping gasket, lid secured by dead weight



Weight:	362 kg
Packing:	5 pcs/pal
Code:	<b>KDG69</b>
Ventilated version:	
Code:	<b>KDG64</b>







COVERING OF MANHOLES IN ROADS AND AREAS WITH EXTREME LOADS

# E600

E600



DN 600 circular sewer manhole covers of E600 class for roads and areas with extreme loads.

## KEM91B | Cover with self-levelling frame and cast-iron lid

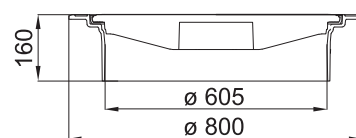
DN 600, vertical and horizontal KASI PUR damping gasket, multi-point spring-loaded locking in frame



Weight:	74 kg
Packing:	14 pcs/pal
Code:	<b>KEM91B</b>

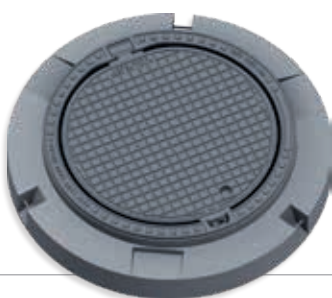
Ventilated version:

Code: **KEM92B**



## KEI95B | Cover with concrete-cast iron spreading frame, cast-iron lid

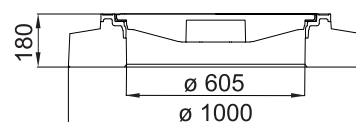
DN 600, vertical and horizontal KASI PUR damping gasket, multi-point spring-loaded locking in frame



Weight:	200 kg
Packing:	5 pcs/pal
Code:	<b>KEI95B</b>

Ventilated version:

Code: **KEI96B**





# F900

Circular sewer manhole covers DN 600, class F900 for airport surfaces.



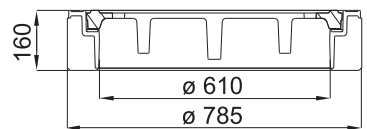
F900

## KFQ05 | Cover with concrete-cast iron frame and cast-iron lid

DN 600, PUR damping gasket in frame, option of logo on lid



Weight:	160 kg
Packing:	8 pcs/pal
Code:	<b>KFQ05</b>
Ventilated version:	
Code:	<b>KFQ03</b>

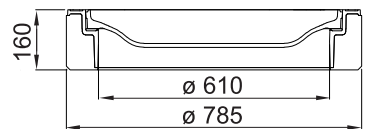


## KFQ22 | Cover with concrete-cast iron frame and concrete-cast iron lid

DN 600, PUR damping gasket



Weight:	169 kg
Packing:	8 pcs/pal
Code:	<b>KFQ22</b>
Ventilated version:	
Code:	<b>KFQ21</b>





## MANHOLE COVERS WITH DN 800 INLET

# DN 800

DN 800

The circular manhole covers are designed to cover DN 800 manholes. They are suitable for roads with high traffic loads. The covers meet the requirements of EN124-2 in D400 load class.

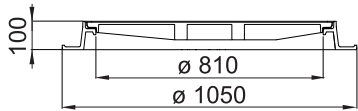


### K8DL95C | Cover with cast-iron frame and cast-iron lid, with hinge

DN 800, safety locking at 90 °, maximum opening at 120 °, vertical and horizontal PUR damping gasket, anti-theft, protective colour, quiet design



Weight:	137 kg
Packing:	8 pcs/pal
Code:	<b>K8DL95C</b>
Ventilated version:	
Code:	<b>K8DL96C</b>

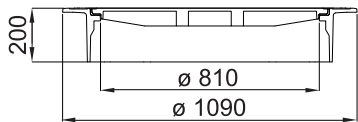


### K8DM95C | Cover with self-levelling frame, cast-iron lid, with hinge

DN 800, safety locking in 90 ° position, maximum opening 120 °, vertical and horizontal PUR damping gasket, anti-theft, protective paint, quiet design



Weight:	176 kg
Packing:	6 pcs/pal
Code:	<b>K8DM95C</b>
Ventilated version:	
Code:	<b>K8DM96C</b>





## COVERING OF RECTANGULAR SHAFTS AND MANHOLES

# Rectangular covers

Rectangular manhole covers meet the requirements of load classes D400 and E600. They are suitable for roads with high traffic load. The covers are not fitted with hinges.

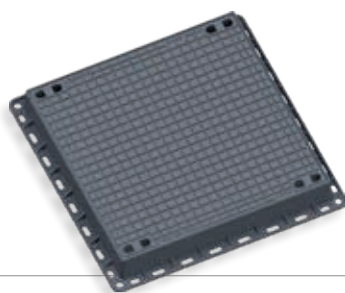
D400

E600

Rectangular covers

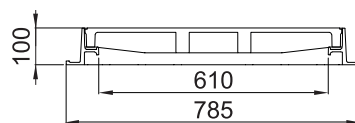
### KQ66EL05C | Square cover with cast-iron frame and cast-iron lid

600 x 600, suitable for heavy traffic loads, PUR damping gasket in frame, lid secured by dead weight, quiet design



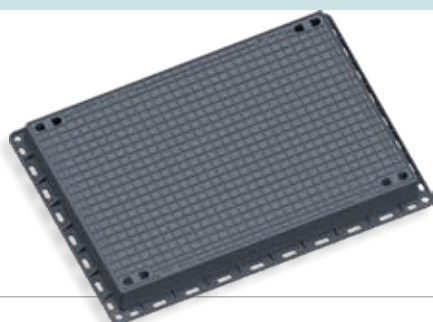
Weight: 100 kg  
Packing: 10 pcs/pal

Code: KQ66EL05C



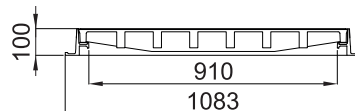
### KQ69EL05C | Rectangular cover with cast-iron frame and cast-iron lid

600 x 900, suitable for heavy traffic loads, PUR damping gasket in frame, lid secured by dead weight, quiet design



Weight: 138 kg  
Packing: 8 pcs/pal

Code: KQ69EL05C





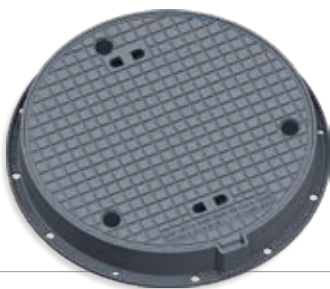
# Watertight and gastight manhole covers

The circular watertight manhole covers are suitable for covering manholes with watertightness requirements in DN 600 and DN 800 diameters. The covers are certified and tested in load classes C250-E600.

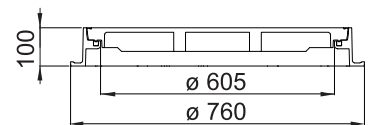


## KELV14CS | Watertight cover with cast-iron frame and cast-iron lid

DN 600, load class E600, cover suitable for traffic loads including tunnels, bolted

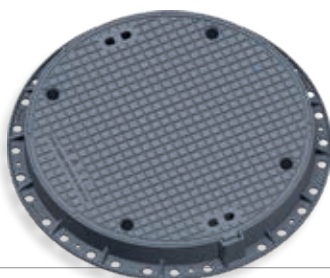


Weight:	83 kg
Packing:	10 pcs/pal
Pressure resistance:	2 bar
Code:	<b>KELV14CS</b>

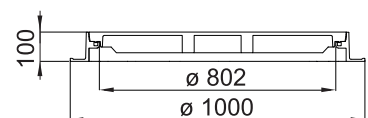


## K8ELV14CS | Watertight cover with cast-iron frame and cast-iron lid

DN 800, load class E600, cover suitable for traffic loads including tunnels, bolted



Weight:	135 kg
Packing:	8 pcs/pal
Pressure resistance:	2 bar
Code:	<b>K8ELV14CS</b>





## COVERING OF MANHOLES WITH WATERTIGHTNESS REQUIREMENT

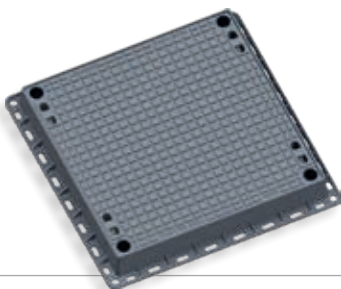
Rectangular watertight covers are suitable for covering rectangular manholes and sumps with watertightness requirement. The covers are certified and tested in load classes D400-E600.



Watertight and gastight manhole covers

### KQ66ELV05CS | Watertight square cover with cast-iron frame and cast-iron lid

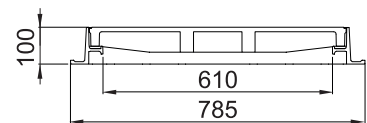
600 x 600, watertight cover for heavy traffic load, PUR damping gasket in frame, lid secured with bolts, quiet design



Weight: 100 kg

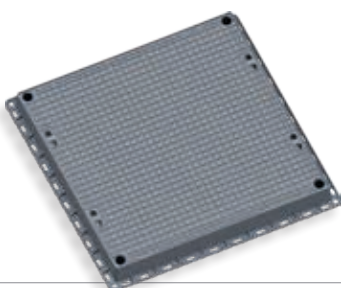
Packing: 10 pcs/pal

Code: KQ66ELV05CS



### KQ99ELV05CS | Watertight square cover with cast-iron frame and cast-iron lid

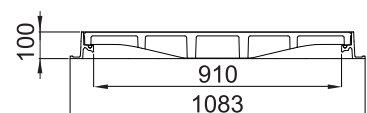
900 x 900, watertight cover for heavy traffic load, PUR damping gasket in frame, lid secured with bolts, quiet design



Weight: 178 kg

Packing: 6 pcs/pal

Code: KQ99ELV05CS





# Street gully gratings

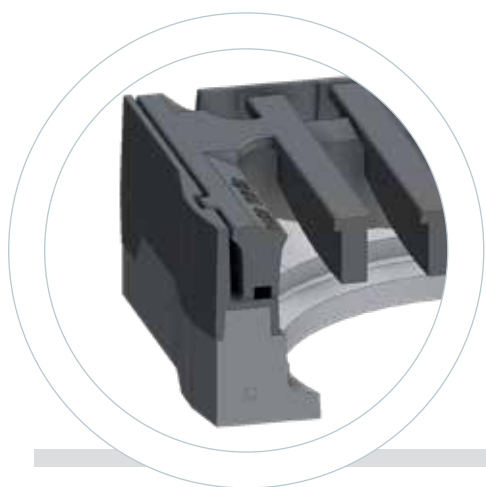
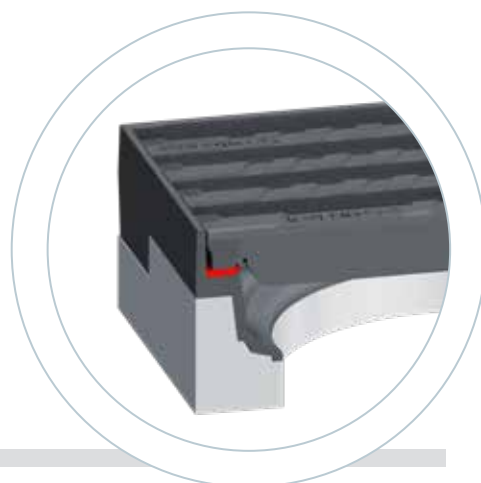
D400

E600

Street gully gratings compliant with the construction regulations EN124-2 are used in class E, D and C. The E600 class for areas with extreme loads. D 400 are suitable for road lanes, parking, storage and other areas where the gratings are crossed, especially by trucks. In Class C 250, they are used for incorporation in the immediate vicinity of the kerb with max 0,5 into the driveway.

## Europa

The EUROPA series gratings are hinged, theft-proof with a PUR damping gasket, resistant to salts and de-icing agents commonly used in road maintenance and to accidental oil contamination. The large surface of the damping gasket and the firm connection to the cast iron guarantee its long life without the need of replacement. This design ensures noiseless operation for the entire lifetime of the gully gratings. The large inlet cross-section ensures high gully capacity.



## Standard

Standard gratings are heavy gratings without hinges secured by dead weight. The gratings are made of cast iron. The frame is always concrete-cast iron with a fitting for a sewage bucket. It is available in classic, narrow-slot, curved or straight versions. The damping gasket is resistant to oils, salts and de-icing agents, ensuring noiseless operation.

- | PUR damping gasket for Europa series
- | option of hinged and non-hinged gratings
- | option of lockable versions for Europa series
- | other gratings designs - narrow-slot, curved, multi-directional
- | heavier lids for greater durability
- | sewage buckets under 500 x 500 gratings are UA4V and UB1
- | sewage buckets under 300 x 500 and KM11RD gratings are UC3 and UD1



**STREET GULLY GRATINGS FOR DRAINING  
OF ROADS AND OTHER AREAS**

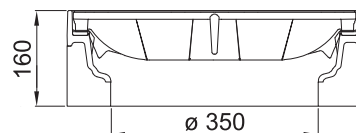


### KM12P | Straight gully grating, with concrete-cast iron frame, cast-iron gratings, with hinge

500 x 500, for D400 traffic load, anti-slip finish, horizontal PUR damping gasket, secured with anti-theft pins, bucket installation option



Weight:	68 kg
Packing:	16 pcs/pal
Code:	<b>KM12P</b>
Curved version:	<b>KM15P</b>
Narrow slot 16 mm:	<b>KM14P</b>

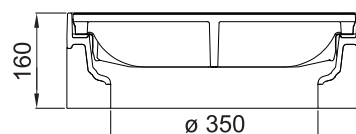


### KM17P | Straight gully grating, with concrete-cast iron frame, cast-iron gratings, with hinge

500 x 500, for E600 traffic load, anti-slip surface, horizontal PUR damping gasket, secured with anti-theft pins, bucket installation option

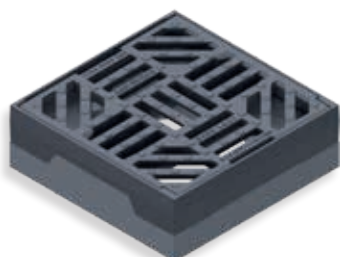


Weight:	75 kg
Packing:	16 pcs/pal
Code:	<b>KM17P</b>

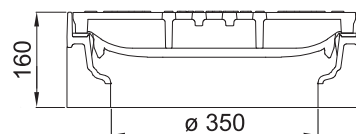


### KM21P | Straight, multi-directional gully grating with concrete-cast iron frame, cast-iron gratings, with hinge

500 x 500, for D400 traffic load, anti-slip surface, horizontal PUR damping gasket, secured with anti-theft pins, bucket installation option



Weight:	71 kg
Packing:	16 pcs/pal
Code:	<b>KM21P</b>
Curved version:	<b>KM22P</b>

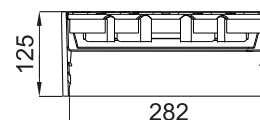


### KM18P | Straight gully grating, with cast-iron frame, cast-iron lid with hinge

300 x 500, for D400 traffic load, horizontal PUR damping gasket, anti-slip finish, secured with anti-theft pins, bucket installation option



Weight:	40 kg
Packing:	24 pcs/pal
Code:	<b>KM18P</b>

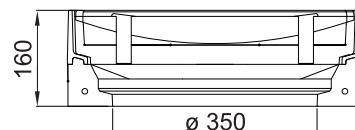


### KM01 | Straight gully grating, with concrete-cast iron frame, cast-iron gratings

500 x 500, for D400 traffic load, anti-slip finish, horizontal PUR damping gasket, bucket installation option



Weight:	105 kg
Packing:	12 pcs/pal
Code:	<b>KM01</b>

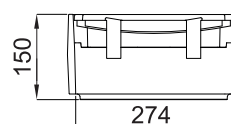


### KM23 | Straight gully grating, with cast-iron frame, cast-iron gratings

300 x 500, for D400 traffic load



Weight:	60 kg
Packing:	24 pcs/pal
Code:	<b>KM23</b>



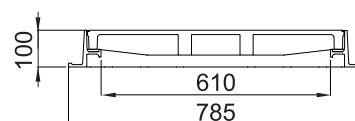
### KQ66EL0MC | VGully grating 600x600 straight, multi-directional, with cast-iron frame, cast-iron gratings

600 x 600, for E600, D400 traffic load, horizontal PUR damping gasket

600  
x  
600



Weight:	95 kg
Packing:	10 pcs/pal
Code:	<b>KQ66EL0MC</b>

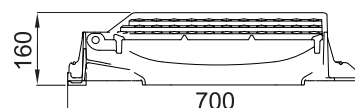


### KM11RD | Gully grating, with cast-iron frame, cast-iron gratings

Highway gratings for direct installation into the Curb King, prevents water from draining along the sloping side of the trough, secured against theft by a non-removable connection, quick maintenance and emptying of the sewage bucket



Weight:	50 kg
Packing:	20 pcs/pal
Code:	<b>KM11RD</b>







**KASI, spol. s r.o.**

Chrudimská 1602

Přelouč 535 01

Czech Republic

Phone: +420 466 501 755

e-mail: [export@kasi.cz](mailto:export@kasi.cz)

**[www.kasi.cz](http://www.kasi.cz)**



The KASI catalogue set also includes:

- | Manhole covers and adjustment rings
- | Street gullies and gully gratings
- | Manhole steps

